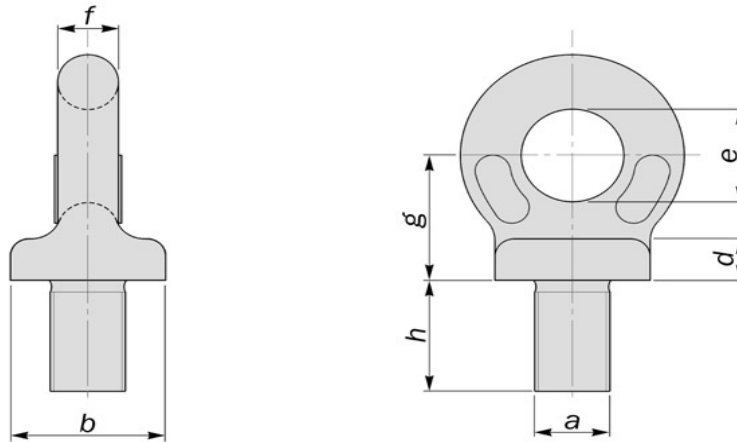


BS 4278/4 Collared Eyebolts - BSW Thread



| Thread Diameter | Working Load | Base Diameter | Collar Thickness | Eye Diameter | Material Diameter | Height | Thread Length | Weight Each |
|-----------------|--------------|---------------|------------------|--------------|-------------------|--------|---------------|-------------|
| a | | b | d | e | f | g | h | |
| inch | tonnes | mm | mm | mm | mm | mm | mm | kg |
| 1/4" | 0.10 | 22 | 7 | 15 | 9 | 20 | 18 | 0.06 |
| 5/16" | 0.15 | 22 | 7 | 15 | 9 | 20 | 18 | 0.06 |
| 3/8" | 0.25 | 22 | 7 | 15 | 9 | 20 | 18 | 0.06 |
| 1/2" | 0.50 | 29 | 10 | 20 | 12 | 26 | 23 | 0.15 |
| 5/8" | 0.90 | 36 | 12 | 24 | 14 | 32 | 28 | 0.27 |
| 3/4" | 1.40 | 45 | 14 | 30 | 18 | 40 | 35 | 0.54 |
| 7/8" | 2.00 | 52 | 17 | 35 | 21 | 46 | 40 | 0.85 |
| 1" | 2.75 | 58 | 20 | 39 | 23 | 52 | 46 | 1.13 |
| 1.1/8" | 3.50 | 65 | 22 | 44 | 26 | 58 | 51 | 1.62 |
| 1.1/4" | 4.50 | 72 | 24 | 48 | 29 | 64 | 56 | 2.37 |
| 1.1/2" | 6.50 | 81 | 27 | 54 | 33 | 76 | 63 | 3.12 |
| 1.3/4" | 9.00 | 101 | 34 | 68 | 40 | 90 | 79 | 6.27 |
| 2" | 12.00 | 115 | 38 | 76 | 46 | 102 | 89 | 9.58 |

Finish- Self Coloured