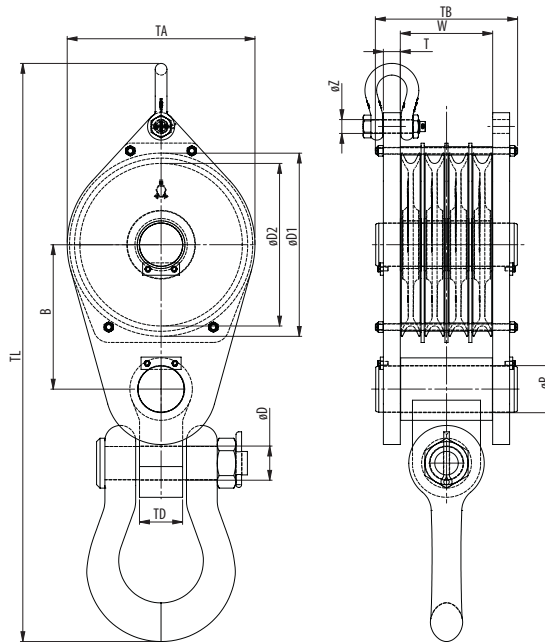
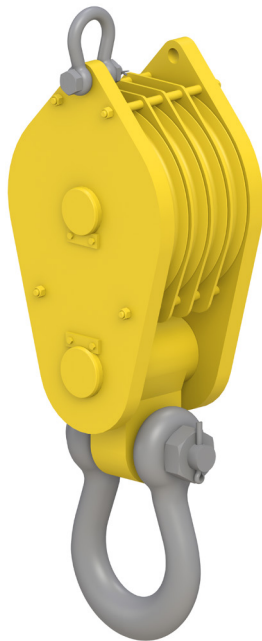


## CONSTRUCTION BLOCK WITH SHACKLE

## 4 SHEAVES



| Model No.       | WLL (Mtons) | For wire ød (mm) | Dimensions (mm) |     |     |     |     |     |    |    |     |     |      |     | Weight (kg) |
|-----------------|-------------|------------------|-----------------|-----|-----|-----|-----|-----|----|----|-----|-----|------|-----|-------------|
|                 |             |                  | øD1             | øD2 | B   | øD  | øP  | TD  | øZ | T  | TA  | TB  | TL   | W   |             |
| CB 260.16.4.41  | 41          | 13-16            | 300             | 260 | 271 | 60  | 80  | 60  | 28 | 30 | 310 | 302 | 1006 | 198 | 151         |
| CB 320.19.4.64  | 64          | 16-19            | 365             | 320 | 317 | 73  | 100 | 80  | 31 | 35 | 375 | 312 | 1219 | 198 | 251         |
| CB 355.22.4.82  | 82          | 19-22            | 410             | 355 | 359 | 86  | 130 | 110 | 41 | 45 | 420 | 400 | 1462 | 266 | 416         |
| CB 400.26.4.105 | 105         | 19-26            | 460             | 400 | 388 | 86  | 130 | 110 | 41 | 45 | 470 | 408 | 1522 | 266 | 503         |
| CB 450.28.4.127 | 127         | 22-28            | 515             | 450 | 429 | 98  | 150 | 120 | 45 | 55 | 530 | 462 | 1746 | 300 | 766         |
| CB 528.32.4.150 | 150         | 22-32            | 595             | 528 | 469 | 111 | 150 | 140 | 45 | 55 | 610 | 462 | 1868 | 300 | 987         |
| CB 575.36.4.173 | 173         | 26-36            | 650             | 575 | 514 | 111 | 170 | 140 | 53 | 60 | 670 | 533 | 2010 | 352 | 1274        |
| CB 630.38.4.191 | 191         | 26-38            | 710             | 630 | 544 | 133 | 170 | 140 | 53 | 60 | 730 | 533 | 2220 | 352 | 1430        |

Minimum Ultimate Strength = 4 x WLL

- Standard delivered with bronze bearing
- The dimensions in this table are indicative only. A drawing will always be submitted prior production and will be the leading document when discussing dimensions.
- Blocks shown here are standard models; inquiries for custom versions are welcome.
- Refer to wire rope manufacturers D/d ratio guideline.



**SEE OUR WARNING & SAFETY INFORMATION**

