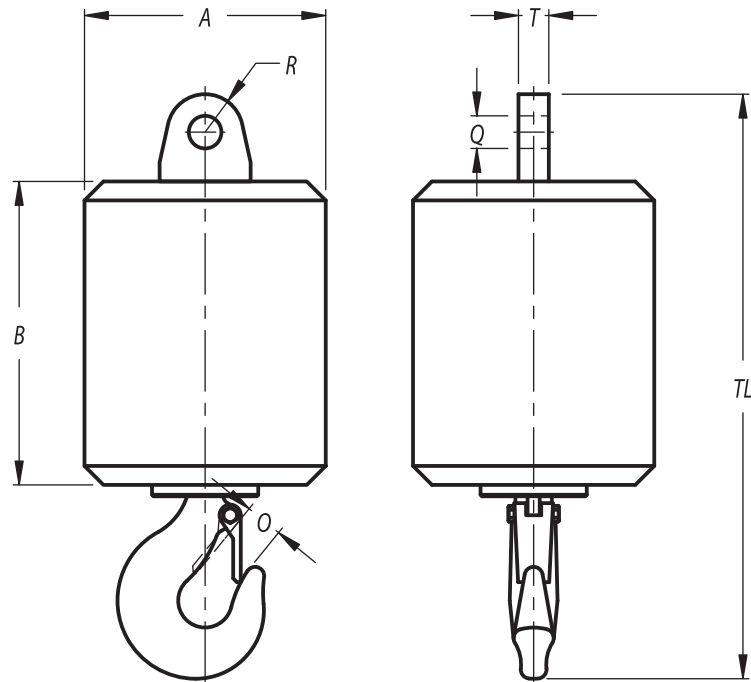


Overhaul ball



Overhaul Ball DIN Hook

Stock No.	Model No.	Type	Hook DIN	WLL (t)	Dimensions (mm)							Weight (kg)
					A	B	O	Q	R	T	TL	
56.0020.003.34	OHB 3,2.20.C	Eye-Hook	2.5 P	3.2	145	145	41	27	30	22	441	20
56.0060.003.34	OHB 3,2.60.C	Eye-Hook	2.5 P	3.2	200	225	41	27	30	22	521	60
56.0080.003.34	OHB 3,2.80.C	Eye-Hook	2.5 P	3.2	220	255	41	27	30	22	551	80
56.0100.003.34	OHB 3,2.100.C	Eye-Hook	2.5 P	3.2	240	275	41	27	30	22	571	100
56.0040.005.34	OHB 5.40.C	Eye-Hook	2.5 P	5	170	190	41	32	35	28	500	40
56.0080.005.34	OHB 5.80.C	Eye-Hook	2.5 P	5	220	255	41	32	35	28	566	80
56.0100.005.34	OHB 5.100.C	Eye-Hook	2.5 P	5	240	275	41	32	35	28	586	100
56.0130.005.34	OHB 5.130.C	Eye-Hook	2.5 P	5	260	310	41	32	35	28	621	130
56.0100.006.34	OHB 6,3.100.C	Eye-Hook	4 P	6.3	240	275	49	37	45	35	630	100
56.0130.006.34	OHB 6,3.130.C	Eye-Hook	4 P	6.3	260	310	49	37	45	35	665	130
56.0170.006.34	OHB 6,3.170.C	Eye-Hook	4 P	6.3	280	340	49	37	45	35	695	170
56.0040.008.34	OHB 8.040.C	Eye-Hook	4 P	8	170	190	49	37	45	35	556	40
56.0130.008.34	OHB 8.130.C	Eye-Hook	4 P	8	260	310	49	37	45	35	665	130
56.0170.008.34	OHB 8.170.C	Eye-Hook	4 P	8	280	340	49	37	45	35	695	170
56.0210.008.34	OHB 8.210.C	Eye-Hook	4 P	8	300	335	49	37	45	35	735	210
56.0045.010.34	OHB 10.045.C	Eye-Hook	5 P	10	170	190	55	43	50	40	643	45
56.0170.010.34	OHB 10.170.C	Eye-Hook	5 P	10	280	340	55	43	50	40	747	170
56.0210.010.34	OHB 10.210.C	Eye-Hook	5 P	10	300	335	55	43	50	40	787	210
56.0250.010.34	OHB 10.250.C	Eye-Hook	5 P	10	320	400	55	43	50	40	807	250
56.0045.013.34	OHB 12,5.045.C	Eye-Hook	5 P	12.5	170	190	55	52	60	45	663	45
56.0210.013.34	OHB 12,5.210.C	Eye-Hook	5 P	12.5	300	355	55	52	60	45	807	210
56.0250.013.34	OHB 12,5.250.C	Eye-Hook	5 P	12.5	320	400	55	52	60	45	827	250
56.0350.013.34	OHB 12,5.350.C	Eye-Hook	5 P	12.5	350	450	55	52	60	45	877	350
56.0050.016.34	OHB 16.050.C	Eye-Hook	6 P	16	170	190	59	59	70	50	723	50
56.0250.016.34	OHB 16.250.C	Eye-Hook	6 P	16	320	400	59	59	70	50	934	250
56.0350.016.34	OHB 16.350.C	Eye-Hook	6 P	16	350	450	59	59	70	50	984	350
56.0500.016.34	OHB 16.500.C	Eye-Hook	6 P	16	410	500	59	59	70	50	1034	500
56.0350.020.34	OHB 20.350.C	Eye-Hook	8 P	20	350	450	69	65	75	60	1022	350
56.0500.020.34	OHB 20.500.C	Eye-Hook	8 P	20	410	500	69	65	75	60	1072	500
56.0650.020.34	OHB 20.650.C	Eye-Hook	8 P	20	430	550	69	65	75	60	1122	650

Minimum Ultimate Strength = 4 x WLL.

- Ball swivel with roller thrust bearing, grease lubricated.
- Ball swivel for higher WLL and of higher weights available on request.
- Hole can be made larger on request.
- Standard painted in yellow.
- On request, swivels can be made suitable for subsea use.